

# GRATING AND HANDRAIL

GRATING AND HANDRAIL



- OSHA COMPLIANT

Our fiberglass guardrail and handrail systems comply with OSHA regulations and are designed for worker safety, including standard yellow components

- CORROSION RESISTANT

Fiberglass guardrail and handrail is a weather resistant alternative to traditional materials like wood and steel. Its built to last and virtually maintenance free.

- FLEXIBLE SOLUTIONS

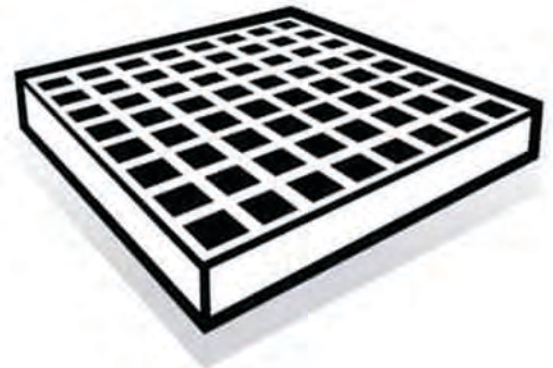
Our guardrail and handrail systems can be factory assembled or shipped ready to assemble for on site fabrication.



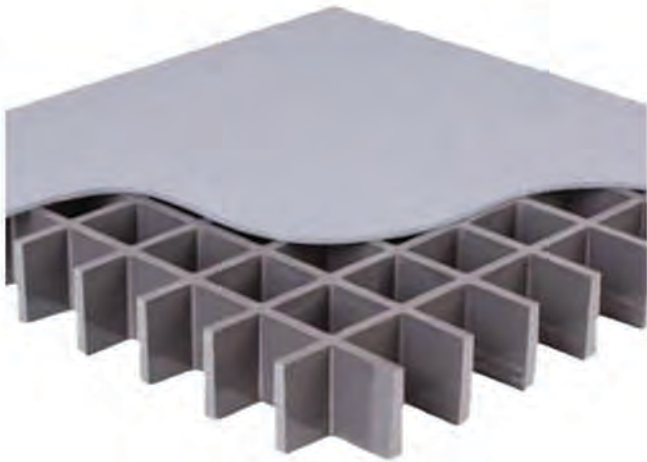
THE CLEAR DIFFERENCE.

# FRP GRATING

Proven corrosion resistance is just one of the benefits of our fiberglass molded grating. It's strong, lightweight, and performs reliably for years, even in extreme conditions. Slip-resistant coating and other options are also available, allowing you to design an FRP product that fits your application perfectly.

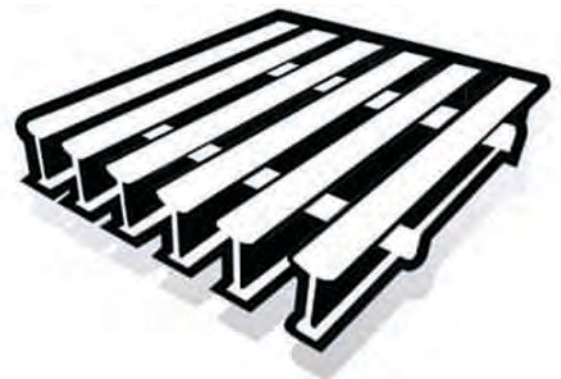


Our molded grating panels are available in square or rectangular mesh configurations with either Meniscus or Grit-top resistant surfaces.



Grit-Top: Quartz grit anti-slip surface  
Meniscus: Concave, half-moon cross section with no grit

Our pultruded fiberglass grating supports heavier loads and longer spans than comparably sized molded grating. It's ideal for demanding applications ranging from ADA-compliant walkways to heavy duty vehicular traffic. Forget about complicated installation, pultruded grating is easy to transport, cut and fabricate using standard tools.



For more information visit our web site [www.nefco.us](http://www.nefco.us)



**NEFCO Systems, Inc.**  
8895 N Military Trail, Suite 100C  
Palm Beach Gardens, FL 33410  
(561) 775-9303