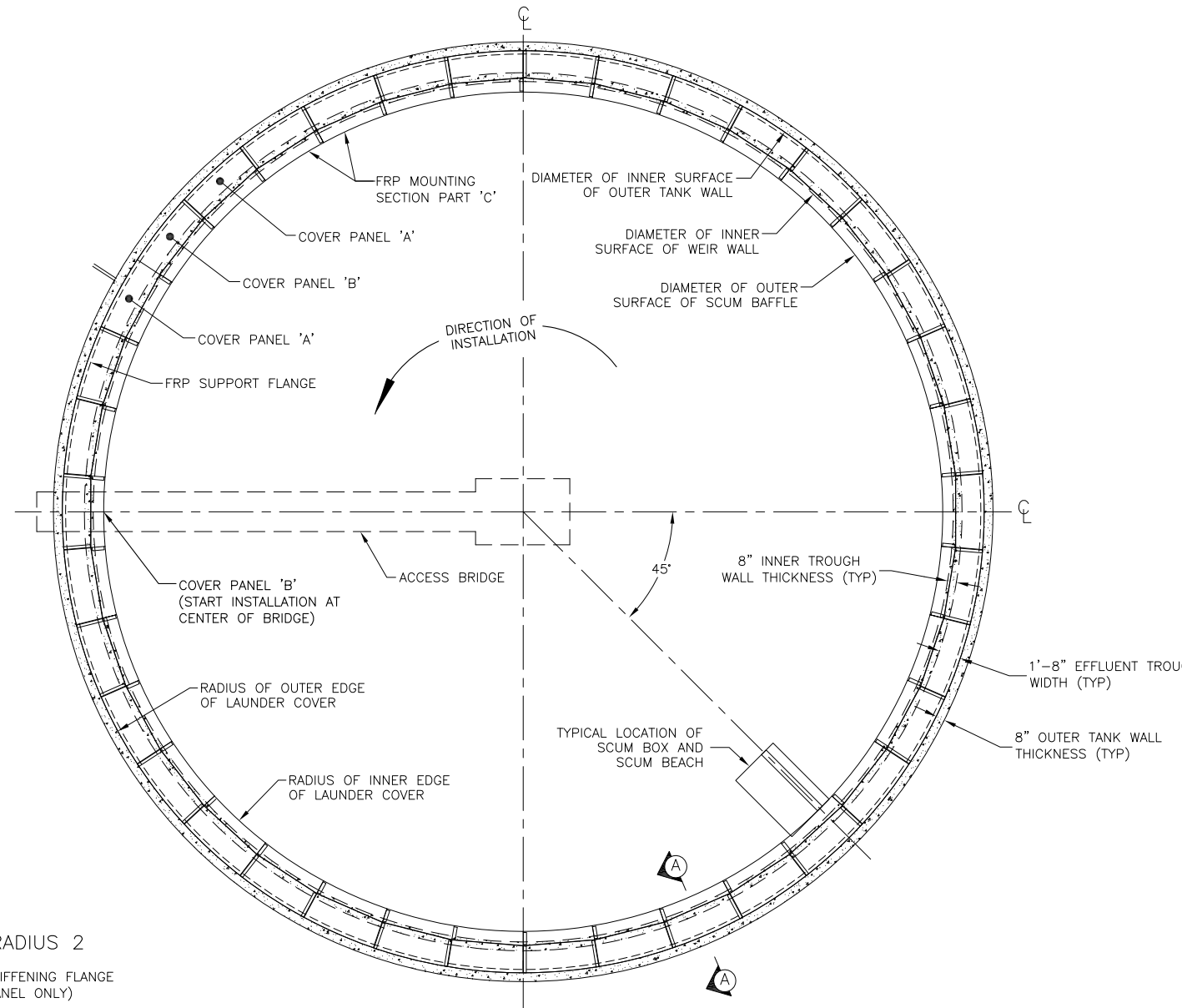
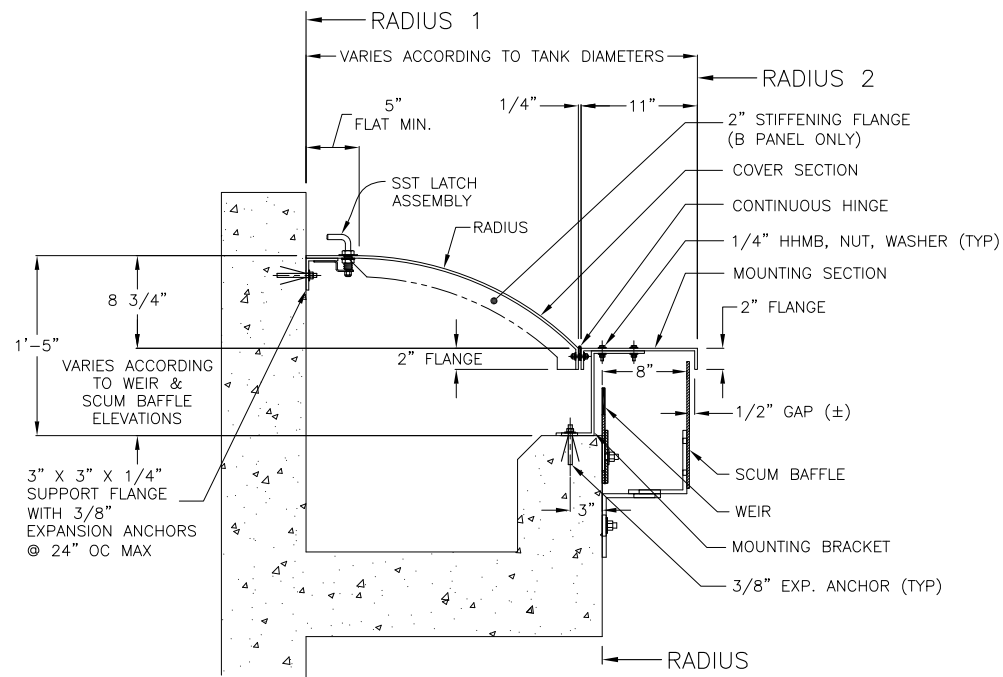


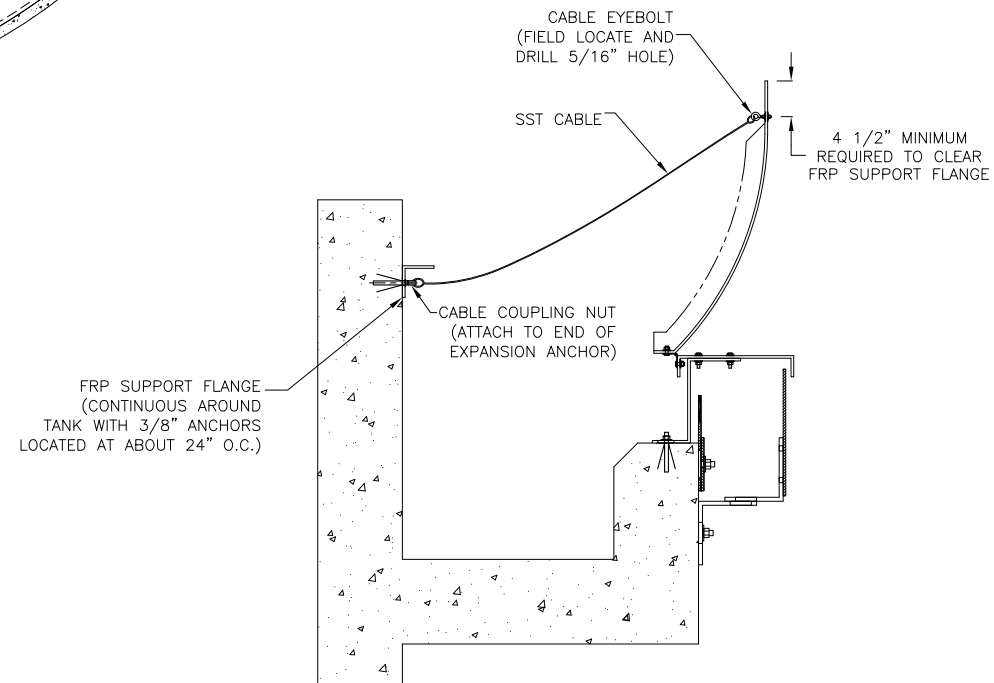
ISOMETRIC



COVER LAYOUT PLAN VIEW  
(NO SCALE)



SECTION A-A



COVER CABLE RESTRAINT ASSEMBLY  
(XX PCS/TANK - XX TOTAL)

REVISIONS:

NO.	DATE	DETAILS

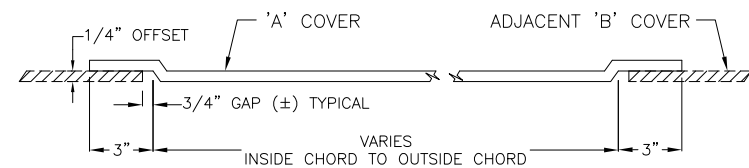
NEFCO, INC.  
8895 NORTH MILITARY TRAIL  
BUILDING-C, SUITE 100  
PALM BEACH GARDENS, FL 33410  
(561) 775-9303  
www.nefcoinnovations.com



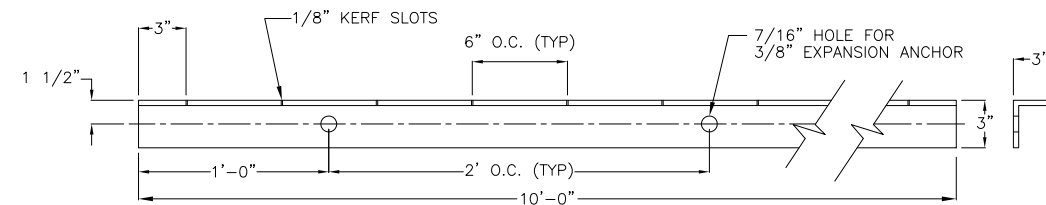
PROJECT: \_\_\_\_\_  
TITLE: FRP EFFLUENT WEIR MOUNTED LAUNDRER COVERS FOR XXXXX  
CONTRACTOR: \_\_\_\_\_  
ENGINEER: \_\_\_\_\_ P.O. \_\_\_\_\_

DWG BY: \_\_\_\_\_  
CHK BY: \_\_\_\_\_  
PRJ MG: \_\_\_\_\_  
SCALE: \_\_\_\_\_ N.T.S.  
DATE: 02-11-2014

DWG NO. \_\_\_\_\_  
SHEET NO: 1 OF 2

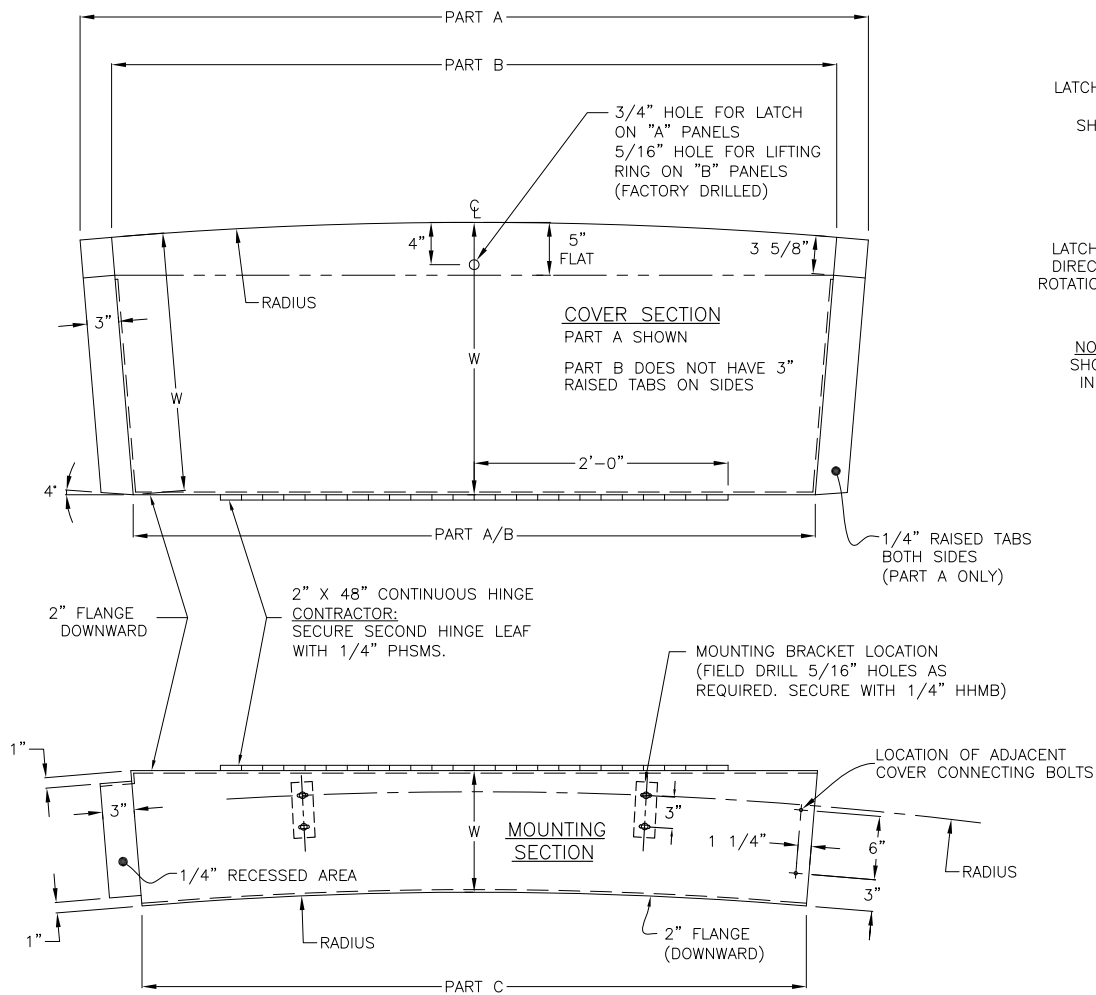


RAISED TAB PROFILE



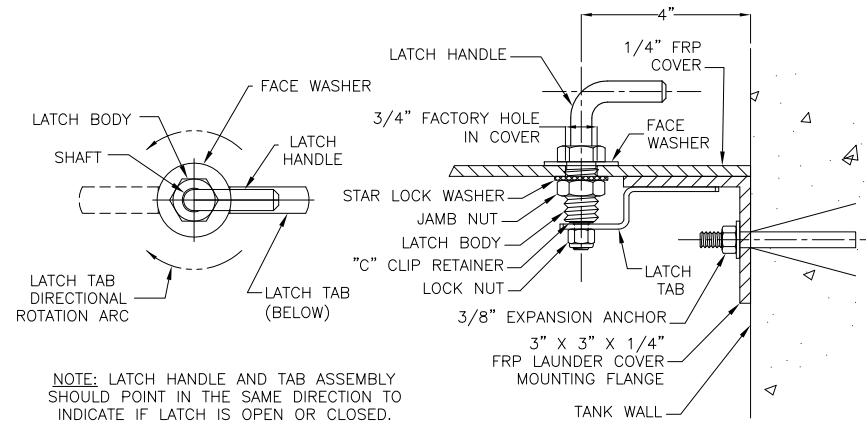
FRP SUPPORT FLANGE

(XX PCS/TANK - XX TOTAL)



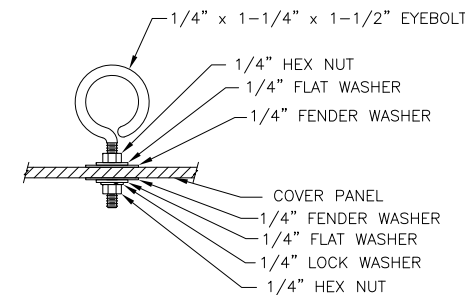
LAUNDRER COVER PANEL UNIT

TOP VIEW



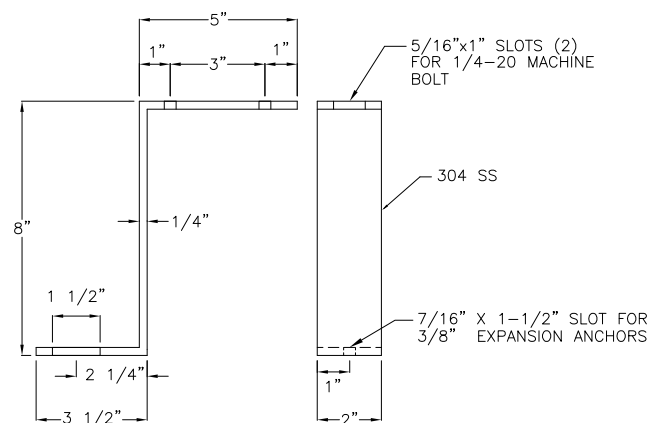
\"A\" PANEL LATCH

(XX PCS/TANK - XX TOTAL)



\"B\" PANEL LIFTING RING

(XX PCS/TANK - XX TOTAL)



MOUNTING BRACKET

(2 PER PANEL UNIT - XX PCS/TANK - XX TOTAL)

NOTES:

- ONE TANK(S), DIAMETER AT COVER =  $\phi XX'-X''$
- COVER PANELS ARE CHOPPED STRAND FRP WITH 1/4" MINIMUM THICKNESS.
- MINIMUM 20 MIL GELCOAT ON UPPER PANEL SURFACE. COLOR IS MARINE WHITE.
- 357-211 PLN CTC GLASS REINFORCEMENT OR EQUIVALENT. ADDITIONAL SUPPORT/REINFORCEMENT AS REQUIRED.
- COREZYN, COR75-AQ-010, ISOPHTHALIC RESIN OR EQUIVALENT, WITH MINIMUM .05% BLACK PIGMENT, MAX 5% FILL AND UV SUPPRESSED.
- PARTS SHALL BE OPAQUE BLACK BENEATH GELCOAT SURFACE, WITH NO FIBER SHOWING.
- LAMINATE SHALL NOT HAVE LESS THAN 30% GLASS CONTENT
- ONE-EIGHTH INCH RADIUS IN ALL CORNERS
- PARTS ARE KNIFE TRIMMED, WITH EDGES SANDED AND HOT COATED.
- MOUNTING HOLES ARE FIELD DRILLED (5/16").
- ALL FASTENERS ARE 304 SST UNLESS OTHERWISE NOTED
- FIELD CUT PANELS AS REQUIRED PER MANUFACTURERS INSTRUCTIONS.
- EACH PANEL SHALL HAVE THE FOLLOWING MINIMUM PHYSICAL PROPERTIES:

PROPERTY	TEST	MINIMUM VALUE
TENSILE STRENGTH	ASTM D-638	12,000 PSI
FLEXURAL STRENGTH	ASTM D-790	20,000 PSI
FLEXURAL MODULUS	ASTM D-790	1.0x10 <sup>6</sup> PSI
NOTCHED IZOD IMPACT	ASTM D-256	12 FT-LBS/IN
BARCOL HARDNESS	ASTM D-2583	40
WATER ABSORPTION	ASTM D-570	0.2%

© COPYRIGHT 2014 NEFCO, INC.

PATENTS:

U.S. PATENT NO.'S	5,965,023
	6,216,881
	6,712,222

MATERIALS / TANK		
ITEM	QTY.	DESCRIPTION
1	XX	FRP COVER SECTIONS - PART A (WITH TABS)
2	XX	FRP COVER SECTIONS - PART B (WITHOUT TABS)
3	XX	FRP MOUNTING SECTIONS - PART C
4	XX	FRP SUPPORT FLANGE
5	XX	SST MOUNTING BRACKETS
6	XX	SST LATCH
7	XX	SST LIFTING RING
8	XXX	SST 3/8" X 3 3/4" EXP. ANCHOR, NUT, WASHER
9	XX	SST 2-1/2" X 48" CONTINUOUS HINGE WITH 1/4" X 3/4" PANHEADSLOT MACHINE SCREW, NUT, WASHER, LOCK WASHER
10	XXX	SST 1/4 X 1 1/4" HHMB, NUT, (2) WASHERS, LOCK WASHER
11	XX	SST 1/8" X 4'-2" COVER RESTRAINT ASSEMBLY

REVISIONS:	NO.	DATE	DETAILS

NEFCO, INC.  
8895 NORTH MILITARY TRAIL  
BUILDING-C, SUITE 100  
PALM BEACH GARDENS, FL 33410  
(561) 775-9303  
www.nefcoinnovations.com



PROJECT: FRP EFFLUENT WEIR MOUNTED LAUNDRER COVERS FOR XXXXX  
TITLE: FRP EFFLUENT WEIR MOUNTED LAUNDRER COVERS FOR XXXXX  
CONTRACTOR: \_\_\_\_\_  
ENGINEER: \_\_\_\_\_ P.O. \_\_\_\_\_

DWG BY: \_\_\_\_\_  
CHK BY: \_\_\_\_\_  
PRJ MG: \_\_\_\_\_  
SCALE: \_\_\_\_\_ N.T.S.  
DATE: 02-11-2014

DWG NO. \_\_\_\_\_  
SHEET NO: 2 OF 2